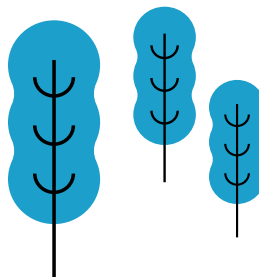




NEW PRO-HT TANK SERIES FOR ECOi

Enjoy an efficient DHW tank.
Panasonic commercial PRO-HT Tank solutions meet all needs of your hot water applications providing 65°C water.



NEW PRO-HT TANK SERIES FOR ECOi

Big volume and high temperature tank for commercial application.

**MAXIMUM
65°C
WATER OUTLET
TEMPERATURE**

1 High performance and high saving

- A7 COP maximum 5,29 and 6,70 for ECOi 3-Pipe in case of heat recovery
- Efficient hot water production by heat recovery
- High temperature hot water without booster
- Save installation time and cost by skipping additional accessories

2 Hot water production with simultaneous heating and cooling

- Maximum water outlet temperature up to 65°C without an electric heater
- Big volume tank from 750L to 1000L capacity
- Heat exchanger design inhibits limescale

3 Trusted quality

- Double tube heat exchanger following drinking-water regulation
- Tank and heat exchanger made with stainless steel
- Internal and external pickling

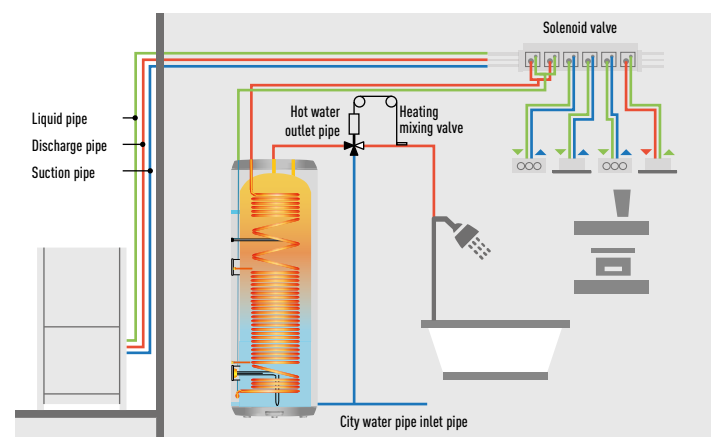


Solution example DHW tank 1000L + ECOi 3-Pipe mixed system

- Ideal offer for hotel projects
- DHW production under spontaneous heating and cooling
- Hot water up to 65°C is efficiently produced by heat recovery
- A7 COP 6,70 considering heat recovery

One by one system compatible list with ECOi

Model	Product compatibility	Hot water outlet temperature
PAW-VP750LDHW	U-16MF3 (3-Pipe)	65°C
PAW-VP1000LDHW	U-16MF3 (3-Pipe)	65°C



PRO-HT TANK

Enjoy an efficient DHW and heating and cooling tank

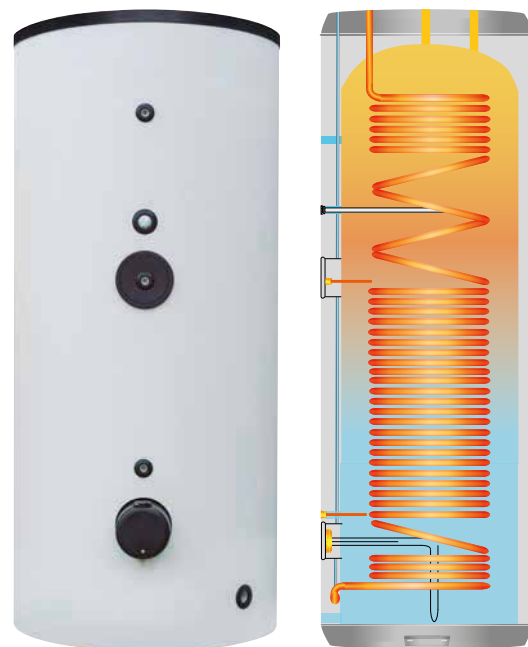
Panasonic commercial PRO-HT Tank solutions meet all needs of your hot water applications providing maximum water temperature 65°C.

High temperature hot water is efficiently produced without any boosters.

Panasonic commercial PRO-HT Tank solutions can be combined with ECOi 3-Pipe to adapt various projects from high-end residentials to offices and hotels.

Technical focus

- Water volume 750L and 1000L
- Maximum hot water production 65°C without boosters
- Heating coil 52m (750L) and 63m (1000L)
- Tank material 3mm
- ABS external case



PRO-HT Tank			PAW-VP750LDHW	PAW-VP1000LDHW
Outdoor Unit			U-16MF3E8	U-16MF3E8
Volume		L	726	933
Height	H x W	mm	1855 x 990	2210 x 990
Connections to the water supply network			1 1/4"	1 1/4"
Net weight / with water		kg	179 / 929	191 / 1121
Nominal electrical power		kW	5,12	6,14
Reference tapping cycle			2XL	2XL
Energy consumption by chosen cycle A7 / W10-55		kWh	4,14	5,10
Energy consumption by chosen cycle A15 / W10-55		kWh	3,50	4,61
COP DHW [A7 / W10-55] EN 16147 ¹⁾			5,29	4,81
COP DHW [A15 / W10-55] EN 16147 ²⁾			7,01	5,32
Standby input power according to EN16147		W/h	77	80
Sound Pressure on 1m		dB(A)	52	52
Quantity of refrigerant		Kg	8,3	8,3
Average insulation thickness		mm	100	100
Heat exchanger connection for inlet / outlet		Inch (mm)	1/2(12,70) / 3/4(19,05)	1/2(12,70) / 3/4(19,05)
Maximum power consumption without heater		kW	20,4	20,4
Maximum power consumption with heater		W	26,4	26,4
Number of electrical heaters x power		W	1 x 6000	1 x 6000
Voltage / Frequency		V / Hz	400/50	400/50
Electrical fuse rating		A	16	16
Moisture protection			IP 24	IP 24
Maximum pipe length		m	50	50
Elevation difference (in/out)		m	30/30	30/30
Operating range - outdoor temperature		°C	-20 ~ +35	-20 ~ +35
Maximum water temperature (heat pump)		°C	65	65
Maximum water temperature (electrical heater)		°C	85	85
Refrigerant (R410A) / CO ₂ Eq.		kg / T	8,3 / 17,1	8,3 / 17,1

Accessories

PAW-VP-RTC5B-VRF Tank Controller for ECOi system

Accessories

PAW-VP-VALV-160/280 Expansion valve kit 16kW / 28kW

1) Heating of sanitary water up to 55°C with inlet air temperature at 7°C, humidity at 89% and inlet water temperature at 10°C. According to EN16147. 2) Heating of sanitary water up to 55°C with inlet air temperature at 15°C, humidity at 74% and inlet water temperature at 10°C. According to EN16147.

This product is designed to meet the European Drinking Directive 98/83/EC amended by 2015/1787/EU. The lifespan of the product is not guaranteed in the case of the use of groundwater, such as spring water or well water, the use of tap water when salt or other impurities are contained, nor in areas of acidic water quality. Maintenance and warranty costs related to these cases are the customer's responsibility.

* When connected as pressurised, safety valve is mandatory.



High performance. A7 COP 6,70 for ECOi 3-Pipe in case of heat recovery. — DHW. With PRO-HT Tank you can also heat your domestic hot water at a very low cost with the optional hot water cylinder. — High temperature. Maximum water outlet temperature up to 65°C. — Operation range. The PRO-HT Tanks work with an outdoor temperature is as low as -20°C. — 5 years compressor warranty. We guarantee the outdoor unit compressors in the entire range for five years.

Panasonic®

To find out how Panasonic cares for you, log on to: www.aircon.panasonic.eu

Panasonic Marketing Europe GmbH
Panasonic Air Conditioning
Hagenauer Strasse 43, 65203 Wiesbaden, Germany

heating & cooling solutions

